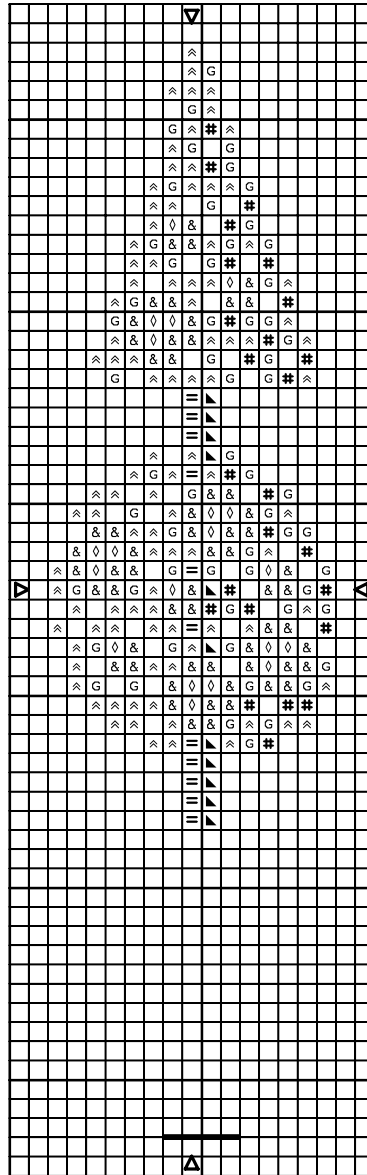


from  
Debbie Cripps

# Orange Topiary



Cross stitch in 2 strands

◇	Pale orange	Anchor 302
&	Dark orange	925
△	Pale green	255
G	Medium green	258
#	Dark green	1044
=	Brown	375
▶	Dark brown	1050

Button position

————— Terracotta Long Tom ENLT

Stitched on Antique White 14 count Aida.

Copyright © and Design Debbie Cripps

'from Debbie Cripps'