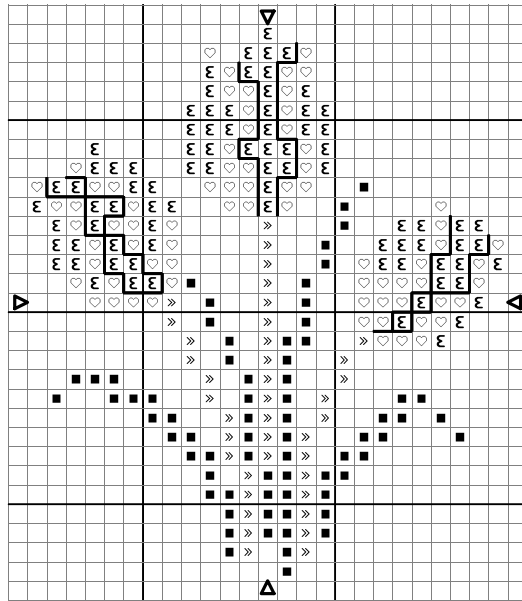
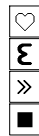


from
Debbie Cripps

Tulip Card



Cross stitch in 2 strands



Pink Mauve vy lt
Cerise med
Forest Green vy lt
Forest Green vy dk

Anchor

1094

62

254

258

Back stitch in 1 strand

————— Cerise med

62

Stitched on Aida Fabric - 14 Count - White - DMDC27W

Mounted in Circular Aperture Card Pack - Mixed Pastel - CECM20

Copyright © and Design Debbie Cripps