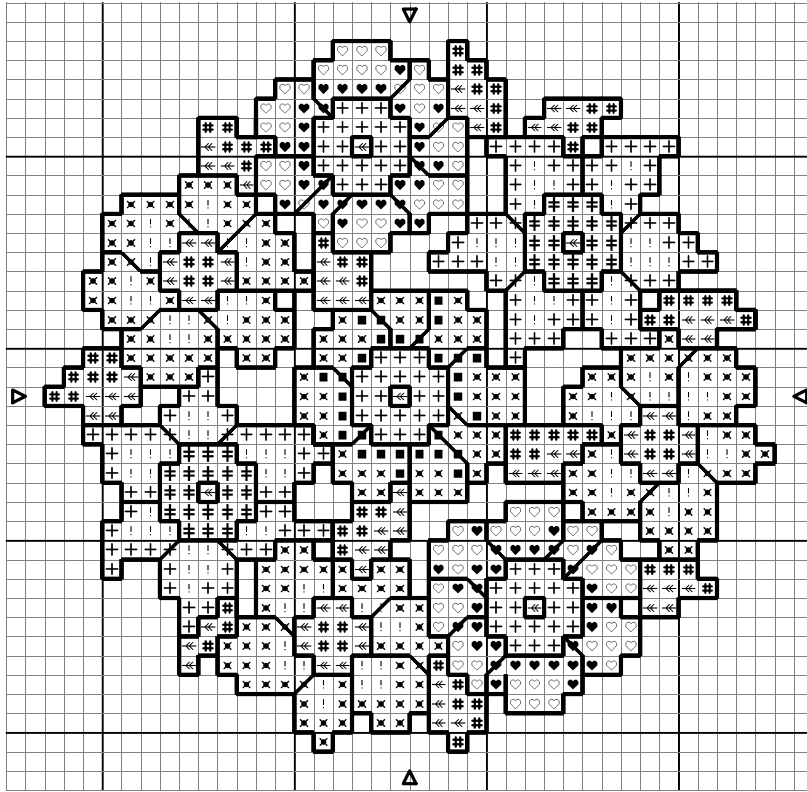


from
Debbie Cripps

Floral Round Coaster



Cross stitch in 2 strands



| | | |
|---|-----------------|--------|
| ! | White | Anchor |
| + | Cream | 292 |
| ≡ | Pale yellow | 305 |
| ← | Pale green | 265 |
| # | Dark green | 268 |
| × | Medium lavender | 109 |
| ■ | Dark lavender | 111 |
| ♡ | Pale cerise | 60 |
| ♥ | Dark cerise | 63 |

Anchor

2

292

305

265

268

109

111

60

63

Back stitch in 1 strand

— Dark grey

1041

Stitched on Cashel Linen - 28 Count - Antique White or
Aida Fabric - 14 Count - Antique White

Copyright © and Design Debbie Cripps